

care START™

S1 Analyzer

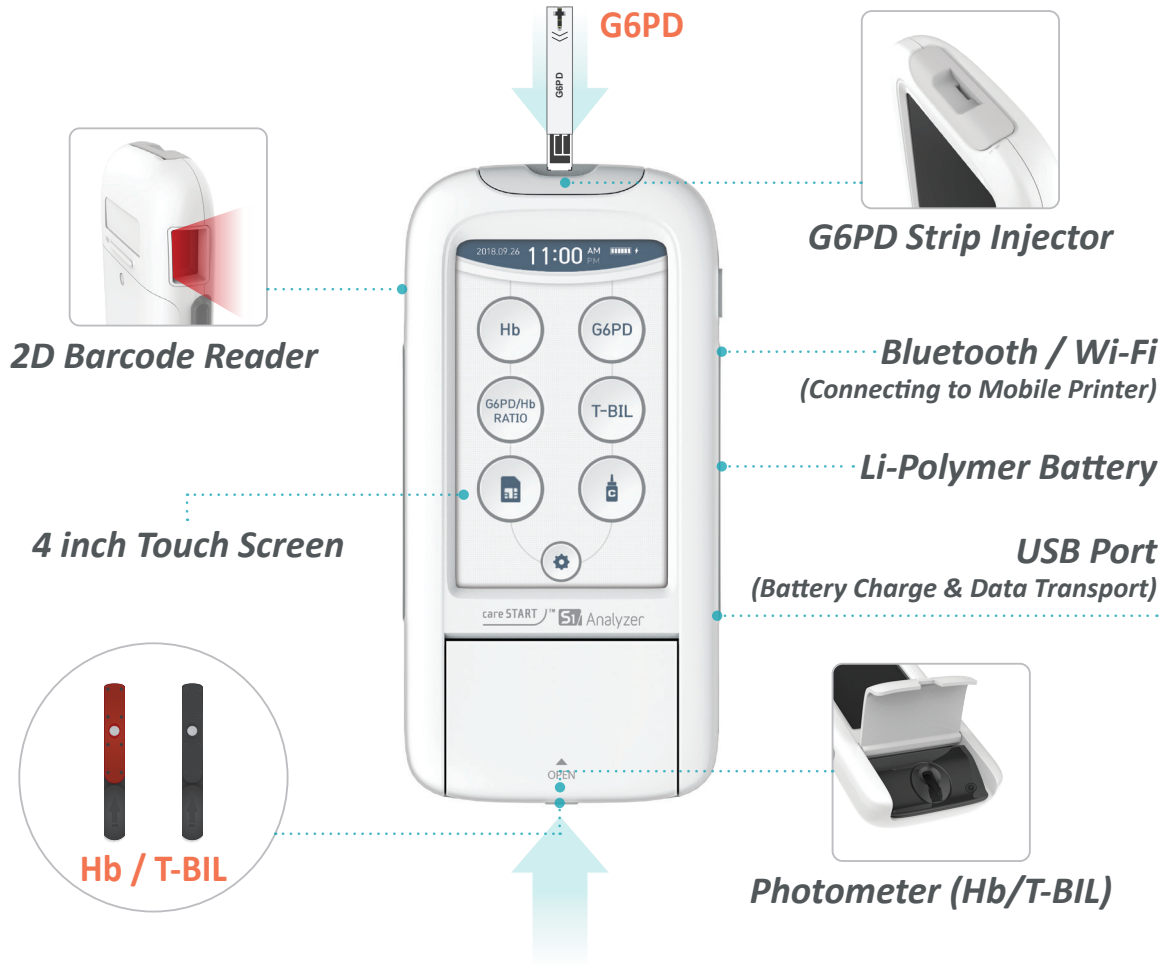
Increase workflow efficiency
with rapid and reliable results



FEATURES

- No requirement for pretreatment or manual step
- Tiny volume of whole blood specimen (Capillary available)
- Short turnaround time within 4 minutes
- User-friendly interface design

careSTART™ S1 Analyzer



Total-Bilirubin Technology

Modified Malloy-Evelyn optical sensing technology

Total Bilirubin + Diazo Reaction → Azobilirubin → Measurement of Reflectance

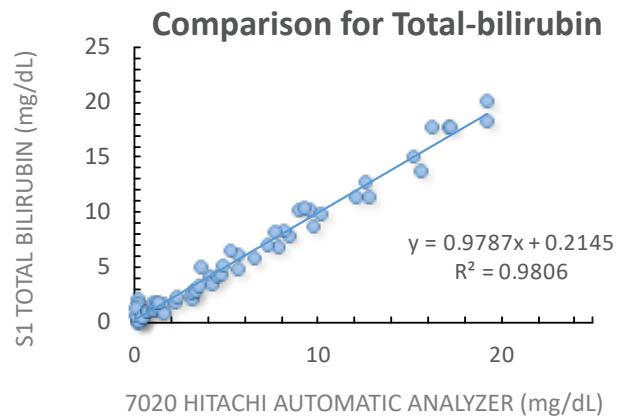
Performance

ACCURACY: The results from clinical studies comparing the careSTART™ S1 Total Bilirubin Strip to 7020 Hitachi Automatic Analyzer are summarized below.

careSTART™ S1 Total Bilirubin vs 7020 Hitachi Automatic Analyzer

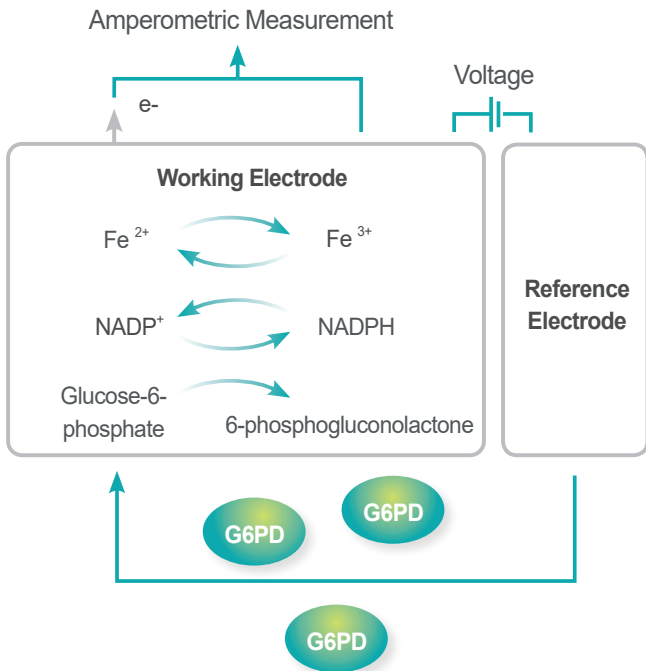
N = 60 Samples
Specimen : Venous Blood

Regression analysis for Total-bilirubin concentration			
Linear regression	R ²	N	Range [mg/dL]
Y=0.9787x+0.2145	0.9806	60	0.14~19.2



G6PD Technology

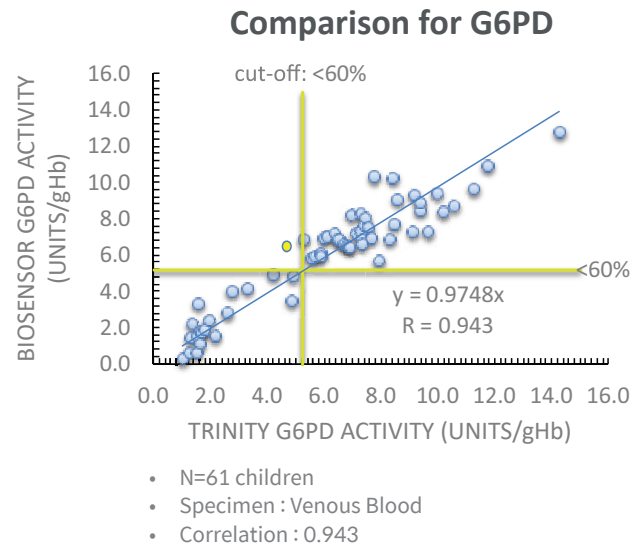
Detection of enzyme activity by electrochemical sensing technology



Performance

G6PD Correlation Analysis: Haiti Study

Only one outlier from the results of comparison study between Trinity and careStart™ G6PD with 60% cut-off



Hemoglobin Technology

Whole Blood $\xrightarrow[\text{Hemolysis}]{\text{Surfactant}}$ Hemoglobin $\xrightarrow[\text{Detection}]{\lambda 525 \text{ nm}}$ Measurement Reflectance

Performance

ACCURACY : The results from clinical studies comparing the careSTART™ S1 Hb strip test strip to the Hemocue Hb 301 microcuvette are summarized below.

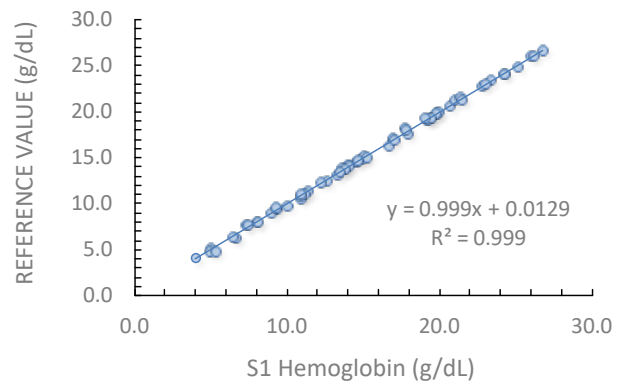
careSTART™ S1 Hb vs. HemoCue® Hb 301.

N = 60 Samples

Regression analysis for hemoglobin concentration			
Linear regression	R ²	N	Range [g/dL]
$Y=0.999x+0.0129$	0.999	60	4.0 ~ 26.8 g/dL

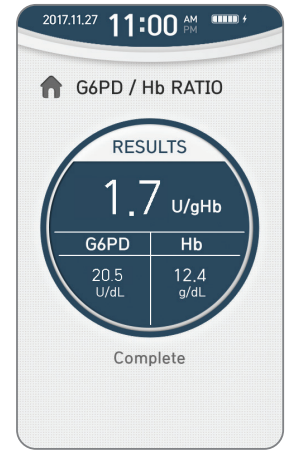
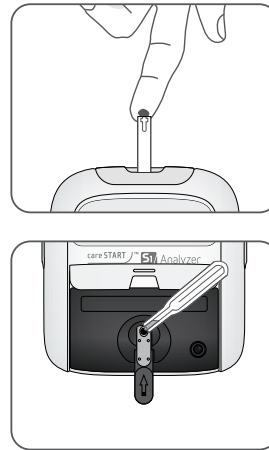
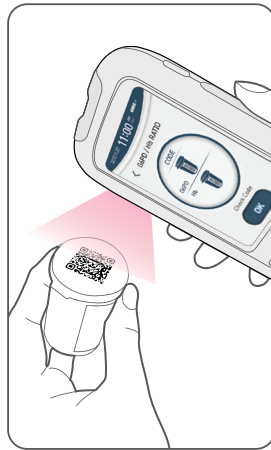
System accuracy for hemoglobin concentration	
Within ±5%	Within ±10%
58/60 (96.7%)	60/60 (100%)

Comparison for Hemoglobin



Test Procedure

- 1 Select button on the menu to start measurement
- 2 Read the 2D barcode on the strip bottle.
- 3 Insert the G6PD, Hb or T-BIL strip into the sensor port and add the specimen.
- 4 The result is displayed on the screen.



Product Specifications

Parameter	Description
Measurement	Total G6PD enzyme activity (U/dL) / Hemoglobin value (g/dL) G6PD/Hb Ratio (U/gHb) / T-BIL (mg/dL)
Test Time	G6PD : 4 min / Hb : 10 sec / T-BIL : 1 min
Sample Type	G6PD, Hb : Capillary and venous whole blood T-BIL : Capillary and whole blood, Serum
Sample Volume	G6PD : 7 µl / Hb : 5 µl / T-BIL : 20 µl
Measuring Range	Specific G6PD : 0 ~ 60 (U/gHb) / G6PD : 0 ~ 300 (U/dL) / Hb : 5 ~ 25 (g/dL) T-BIL : Capillary and whole blood : 1 ~ 30 (mg/dL) , Serum : 0.1 ~ 30 (mg/dL)
Memory	Store 1,000 measurement data
Display	4 inch TFT-LCD, touch screen
Interface	2D barcode reader & Bluetooth & Wi-Fi & USB
Power	Micro 5Pin (5V / 1A)
Dimension (W x H x D)	81 x 162 x 24.5 (mm)
Weight	217 g
Battery	Li-Polymer Battery (3000 mAh)

Order Information

Product	Cat. No.	Package Size	Product	Cat. No.	Package Size
careSTART™ S1 Analyzer	BSA-E00182	Each	careSTART™ S1 G6PD Biosensor Control	Level I (BGO-N05082) Level II (BGT-N05082)	50 µL x 10 vials / Deionized Water (0.2 mL x 5 vial)
careSTART™ S1 G6PD Strip	BSG-E02582	25 strips/vial	careSTART™ S1 Hb Biosensor Control	HCA-N05082	1 level / 60 µL x 5 vials
careSTART™ S1 Hb Strip	BSH-E02582	25 strips/vial	careSTART™ S1 T-BIL Biosensor Control	HCB-N05082	2 levels / each 5 vials x 0.25 mL
careSTART™ S1 T-BIL Strip	BSB-E02582	25 strips/vial			

BR030 / Rev.C / 2022.01.11.